

DATE STAMPS

SERIES 3000

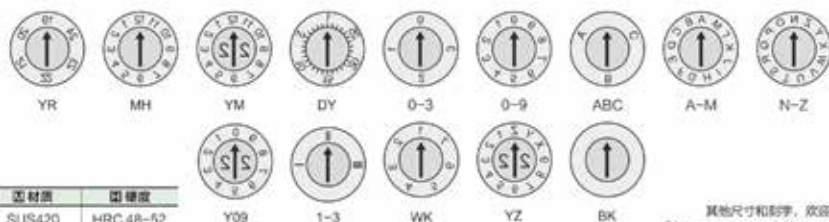
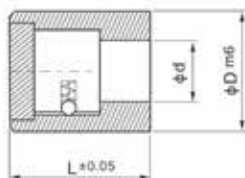
日期章系列



整体式日期章

DATE STAMPS

A02



Type	D(mm)	L(mm)	d(mm)	文字深度 Text Depth	箭头深度 Arrow Depth
A02	3	6/8/10	1.6	0.1	0.2
	4	6/8/10	1.8	0.12	0.2
	5	6/8/10	2.5	0.16	0.25
	6	8/10	3	0.16	0.4
	8	10	4	0.16	0.4
	10	10/12	5	0.2	0.4
	12	12/14	6	0.25	0.45
	16	14	8	0.25	0.45
	20	14/16	10	0.25	0.45



Type Pattern D L Year
A02 - YR - 3 - 6 - 22

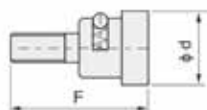
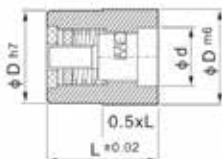
产品特点 Precautions

- A02是整体式波珠定位结构，箭头指示准确，容易转动，不易偏位。
- 本款日期章不能更换芯子
- A02 is an integral wave bead positioning structure, the arrow indicates accurate, easy to rotate, not easy to deviate.
- The arrow of this date stamps cannot be replaced.

分型面更换型日期章

DATE STAMPS

A03



YR



MH



YM



DY



0-3



0-9



ABC



A-M



N-Z



Y09



1-3



WK



YZ



BK

原材料	硬度
SUS420	HRC48-52

其他尺寸和刻字，欢迎洽询
Other engravings available on request

Type	D(mm)	L(mm)	d(mm)	F	文字深度 Text Depth	箭头深度 Arrow Depth
A03	4	8	2.4	7.7	0.14	0.25
	5	8	2.9	7.7	0.18	0.25
	6	8	3.7	7.7	0.18	0.4
	8	10	5	9.7	0.18	0.4
	10	12	6.3	11.7	0.2	0.4
	12	14	7.5	13.7	0.2	0.4
	16	14	11	13.7	0.25	0.45
	20	16	13.2	15.7	0.25	0.45



Type Pattern D L Year
A03 - YR - 4 - 8 - 22

产品特点 Precautions

- 可以和MISUMI的DTBX,DTXS,DTDX, DTEX,DTGX等互换。
- 波珠结构，箭头指示准确，定位效果好；
- 从日期章头部，可快速更换内镶件；
- 内镶件可变更年份，适合长期生产型模具，从而可节约模具成本。
- It can be interchangeable with MISUMI's DTBX,DTXS,DTDX, DTEX,DTGX, etc.
- Wave bead structure, accurate arrow indication, good positioning effect;
- From the head of the date stamp, the inner insert can be quickly replaced;
- The inner inserts can change the year, which is suitable for long-term production molds, which can save mold costs.

芯子和外壳都可以单独订购 Insert or body can be ordered separately

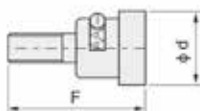
Type	Name	price
AA03	Arrow of the date stamp	1/3 of the A03
AB03	Body of the date stamp	2/3 of the A03



年份镶件



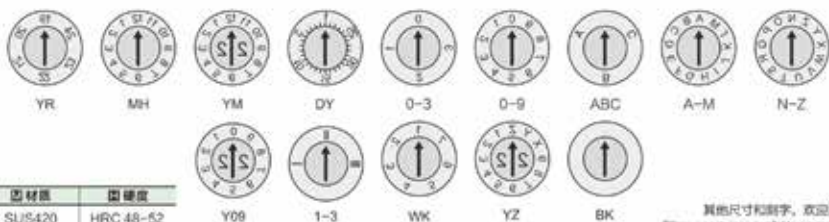
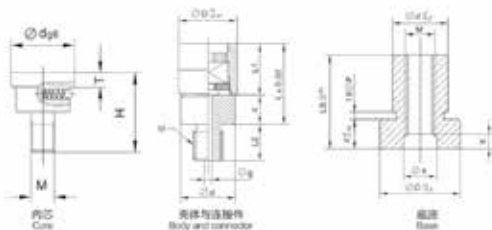
箭头镶件



高度可调整型日期章

DATE STAMPS

A04



其他尺寸和刻字, 欢迎洽询
Other engravings available on request

原材料	硬度
SUS420	HRC 48-52

■ 内芯

Type	d	T	M	H	文字深度	箭头深度	文字字高H
A04X	3.7	1.5	1.6*0.2	7.7	0.22	0.4	0.85
	5.0	2.0	2.3*0.25	9.7			1.15
	6.3	2.5	2.6*0.45	11.7		0.5	1.4
	7.5	2.5	3*0.5	13.7			1.6

■ 壳体与连接件

Type	D _{in}	d	g	M	L1	L2	L	文字深度	箭头深度	文字字高H
A04K	6	5.5	1.0	3*0.5	8.0	4.0	12.0	0.22	0.4	0.85
	8	7.5	1.0	4*0.7	10.0	5.0	14.0			1.15
	10	9.5	1.5	5*0.8	12.0	6.0	16.0		0.5	1.4
	12	11.5	2.0	6*1	14.0	8.0	18.0			1.6

■ 底座

Type	d	M	ee	C	P
A04D	5.5	3*0.5	3.5	9.0	5.0
	7.5	4*0.7	4.5	11.0	7.0
	9.5	5*0.8	5.5	15.0	9.0
	11.5	6*1	6.5	20.0	11.0

LR	X			
	e6	e8	e10	e12
10.00-20.00	4.0	2.0	0	0
20.01-30.00	14.0	12.0	10	8
30.01-40.00	24.0	22.0	20	18
40.01-50.00	34.0	32.0	30	28
50.01-60.00	-	42.0	40	38
60.01-70.00	-	-	50	48

原材料	硬度
SUS420	48-52HRC

Type	Pattern	D	L	Year
A04	- YR	- 6	- 12	- 22

■ 产品特点 Precautions

- 可调整型连续可换式日期章优点, 增加连接螺母与底座。
- 改变底座高度, 可随要求调节所需要的安装高度。
- 由于标准零件组合, 提高模具的排气性能。

- The advantage of the adjustable continuous interchangeable date marked pins is to increase the connection between the nut and base.
- Change the height of base, and adjust the required installation height according to the requirements.
- Due to the standard inserts combination, it improves the exhaust performance of mold.

标准式底部换芯日期章

DATE STAMPS

A05



YR



MH



YM



DY



0-3



0-9



ABC



A-M



N-Z



Y09



1-3



WK



YZ



BK

原材料	硬度
SUS420	HRC 48-52

其他尺寸和刻字，欢迎洽询
Other engravings available on request

Type	D(mm)	B(mm)	d(mm)	L(mm)	文字深度 Text Depth	箭头深度 Arrow Depth
A05	3	2	1.4	8	0.14	0.2
	4	2.8	1.9	8	0.14	0.25
	5	3.4	2.3	8	0.18	0.25
	6	4	2.8	8	0.18	0.4
	8	5.6	4	10	0.18	0.4
	10	6.5	5	12	0.2	0.4
	12	8	6.5	14	0.2	0.4
	16	12	10	14	0.25	0.45
20	14	12	16	0.25	0.45	



Type Pattern D L Year
A05 - YR - 4 - 8 - 22

产品特点 Precautions

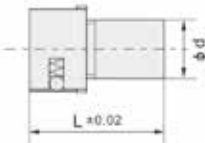
- 可以同MISUMI的DTBX,DTXS,DTDX, DTEX,DTGX等互换。
- 波珠结构，箭头指示准确，定位效果好。
- 从日期章尾部，可快速更换内镶件。
- 内镶件可变更年份，适合长期生产型模具，从而可节约模具成本。
- It can be interchanged with MISUMI's DTBX, DTXS, DTDX, DTEX, DTGX, etc.
- ToWave bead structure, accurate arrow indication, good positioning effect.
- From the end of the date stamp, the inner insert can be quickly replaced.
- The inner inserts can change the year, which is suitable for long-term production molds, which can save mold costs.

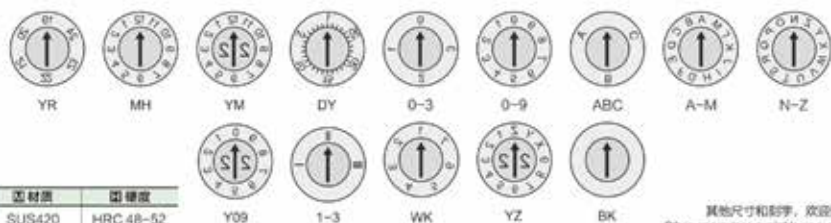
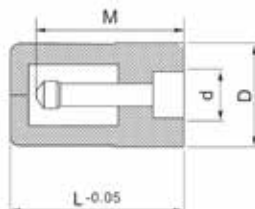
芯子和外壳都可以单独订购 Insert or body can be ordered separately

Type	Name	price
AA05	Insert of the date stamp	1/3 of the A05
AB05	Body of the date stamp	2/3 of the A05



年份镶件 箭头镶件



A06


其他尺寸和图案，欢迎洽商
Other engravings available on request

原材料	硬度
SUS420	HRC 48-52

Type	D(mm)	L(mm)	d(mm)	M	文字深度 Text Depth	箭头深度 Arrow Depth
A06A A06B	4	12	2.2	7.7	0.1	0.25
	5	12	3	7.7	0.12	0.25
	6	20	3.2	17	0.15	0.4
	8	20	4.7	17	0.18	0.4
	10	20	5.7	17	0.2	0.4
	12	20	6.7	17	0.2	0.4
	16	20	8.7	17	0.25	0.45
	20	20	10.7	17	0.25	0.45



Type	Pattern	D	L	Year
A06A	- YR -	4	12	22

产品特点 Precautions

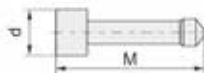
- 本款日期章可以和CUMSA的FA系列替换
- A06A为整体式结构，内部芯子不可更换。
- A06B为可换芯结构，箭头年份可以更换。
- 顺时针转动内镶件，无凹凸现象；
- 内镶件可正面更换，逆时针转动2-4圈可以将芯子转出，无需拆模，更换方便简单；
- 注意事项：模具在生产过程，调节日期章时严禁逆时针转动，应顺时针调节，避免内镶件松动。
- This date stamp can be replaced with the FA series of CUMSA
- A06A is integral structure, arrow core is not replaceable.
- A06B is a replaceable core structure, arrow core can be replaced.
- Rotate the inserted parts clockwise, and no concavo convex phenomenon appears;
- Inserts can be replaced frontally, and the core can be turned out by 2-4 turns counter-clockwise without removing the mould. The replacement is convenient and simple.
- Note: In the production process, don't rotate anticlockwise when adjusting the date stamp, and you should adjust it clockwise to avoid the inserted parts loose.

芯子和外壳都可以单独订购 Insert or body can be ordered separately

Type	Name	price
AA06	Insert of the date stamp	1/3 of the A06
AB06	Body of the date stamp	2/3 of the A06



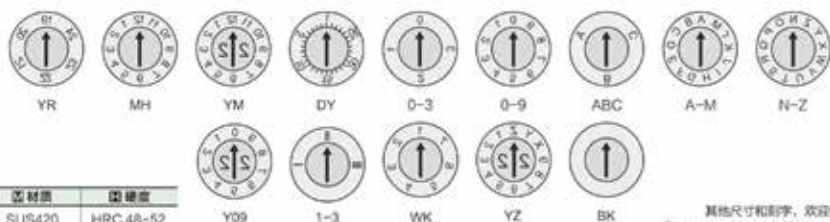
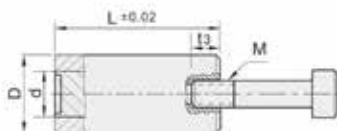
年份镶件 箭头镶件



H式标准日期章

DATE STAMPS

A07



芯材质	硬度
SUS420	HRC 48-52

其他尺寸和刻字, 欢迎洽询
Other engravings available on request

Type	D(mm)	L(mm)	d(mm)	M	文字深度 Text Depth	箭头深度 Arrow Depth
A07A A07B	4	12.5	2	M2	0.1	0.25
	5	14	2.5	M2.5	0.12	0.25
	6	16	3	M3	0.15	0.4
	8	18	4	M3	0.18	0.4
	10	22	5	M3	0.2	0.4
	12	25	6.4	M4	0.2	0.4



Type	Pattern	D	L	Year
A07A	- YR -	4	- 12.5 -	22

产品特点 Precautions

- 本款日期章可以和HASC.O的Z486系列替换, Z486是老款, 新款请参考Z487 (A09)
- A07A为整体式结构, 内部芯子不可更换。
- A07B为可换芯结构, 箭头年份可以更换, 内撞件需逆时针转动装入。
- 日期章尾端配有螺纹, 方便后端用螺丝固定。
- This date stamp can be replaced with the Z486 series of HASC.O, Z486 is the old model, please refer to A09 for the new one.
- A07A is integral structure, arrow core is not replaceable.
- A07B is a replaceable core structure, arrow core can be replaced, When installing internal insert, anticlockwise rotation is required.
- Tail end of date stamp has thread which is convenient for fixing by screw at back end.

● 芯子和外壳都可以单独订购 Insert or body can be ordered separately

Type	Name	price
AA07	Insert of the date stamp	1/3 of the A07B
AB07	Body of the date stamp	2/3 of the A07B



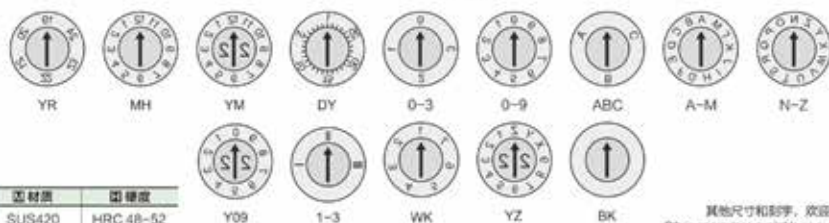
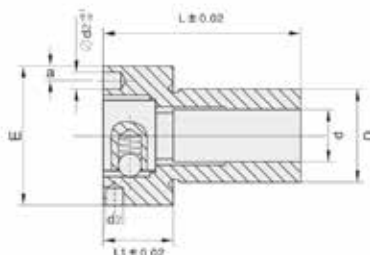
年份撞件 箭头撞件



台阶可更换式日期章

DATE STAMPS

A08



其他尺寸和图案，欢迎洽商
Other engravings available on request

基材质	硬度
SUS420	HRC 48-52

Type	D(mm)	L(mm)	d(mm)	E(mm)	L1(mm)	d2(mm)	a(mm)	文字深度 Text Depth	箭头深度 Arrow Depth
A08	6	14	3.5	10	5	1.5	0.9	0.18	0.4
	8	17	4.5	12	6	1.5	0.9	0.18	0.4
	12	22	6.5	20	10	2	3.5	0.2	0.4
	16	27	9	23	11	2	3.5	0.25	0.45
	20	36	10.5	28	14	3	4	0.25	0.45



Type	Pattern	D	L	Year
A08	- YR	- 6	- 14	- 22

产品特点 Precautions

- 可以和HASCO的Z48, Z482, Z483, Z485等互换。
- 本款和OPITZ的DATI 2100外形尺寸一致，但是内部箭头尺寸稍有差别，订购时请注明所需型号。
- 芯子可以底部更换，更换简单方便，节省成本。
- 主体挂台式外形设计，解决注塑生产中日期章以正面粘模脱出。
- 主体侧面配有销钉定位，用于日期章防转。
- 注意事项：更换此内插件需要拆模具，内插件从模板内退出后更换。
- It can be interchangeable with Z48, Z482, Z483, Z485 of the HASCO.
- The size of this model is the same as OPITZ DATI 2100, but the size of the internal arrow is slightly different. Please specify the required model when ordering.
- Insert can be replaced from the bottom, easy replacement and cost savings.
- The main hang desktop form factor design to solve injection molding manufacturing date chapter in a positive die sticking prolapse.
- The main body side is equipped with a positioning pin, used to date chapter anti-rotating.
- Note: Replace the insert need to open mold, insert inside out from within the template for the replacement.

芯子和外壳都可以单独订购 Insert or body can be ordered separately

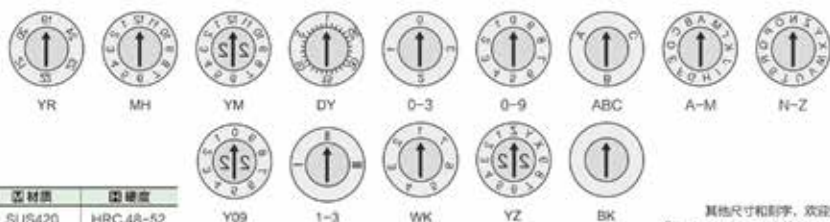
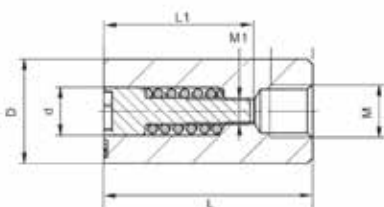
Type	Name	price
AA08	Insert of the date stamp	1/3 of the A08
AB08	Body of the date stamp	2/3 of the A08



O式日期章

DATE STAMPS

A09



芯材质	硬度值
SUS420	HRC48-52

其他尺寸和刻字, 欢迎洽询
Other engravings available on request

Type	D(mm)	L(mm)	L1(mm)	d(mm)	M1	M	文字深度 Text Depth	箭头深度 Arrow Depth
A09A A09B	3	14	9	1.6	M1x0.15	M2	0.1	0.2
	4	14	10.5	2.5	M1.4x0.2	M2	0.12	0.2
	5	17	13	3.1	M1.6x0.2	M3	0.18	0.25
	6	17	13	3.1	M1.6x0.2	M3	0.18	0.4
	8	20	14	4.6	M2.5x0.35	M4	0.18	0.4
	10	20	14	4.6	M2.5x0.35	M5	0.2	0.4
	12	25	17	6.4	M3x0.5	M6	0.2	0.4
	16	33	23	8.4	M3.5x0.6	M8	0.25	0.45
20	33	23	11	M3.5x0.6	M8	0.25	0.45	



Type	Pattern	D	L	Year
A09A	- YR -	4	14	22

产品特点 Precautions

- 可以和HASCO的Z48700,Z48705,Z48706,Z48712等互换。
- 可以和DME的OYN,OMN,YMN,ODN,OSN等互换。
- 可以和OPITZ的DATI 1000系列等互换。
- A09A为整体式结构, 内部芯子不可更换。
- A09B为可换芯结构, 箭头年份可以更换。
- 可在模具上直接更换插件, 无需卸模更换。
- 安装方便、弹簧定位、零件结构简单。
- 由于是细螺牙调节, 分型面有一牙螺距(max)的上下浮动。
- 安装时取下芯子, 以免芯子的螺牙损伤。
- It can be interchanged with HASCO's Z48700, Z48705, Z48706, Z48712 and DME's OYN, OMN, YMN, ODN, OSN and OPITZ's DATI 1000 series.
- A09A is integral structure, arrow core is not replaceable.
- A09B is a replaceable core structure, arrow core can be replaced.
- Replace the inserts on the mold directly without disassembly for replacement.
- The installation is convenient, the spring positioning and part structure are simple.
- Due to the fine thread adjustment, the sub-surface has the plus or minus of distance of one thread (max).
- In installation, remove the core to damage the thread of core.

芯子和外壳都可以单独订购 Insert or body can be ordered separately

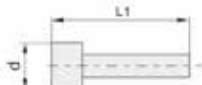
Type	Name	price
AA09	Insert of the date stamp	1/3 of the A09B
AB09	Body of the date stamp	2/3 of the A09B



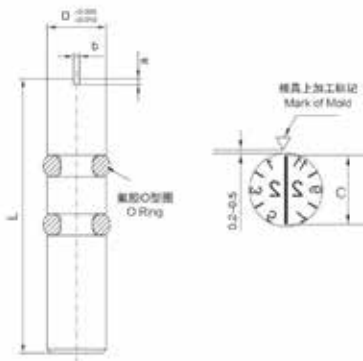
年份插件



箭头插件



A10



原材料	硬度	耐温度
U40	HRC 38-40	≥150℃
SUS420	HRC 47-52	<150℃

其他尺寸和图案，欢迎洽询
Other engravings available on request

Type	D(mm)	D2(mm)	L(mm)	c(mm)	b(mm)	a(mm)
A10	2	2.1	14	1.8	0.3	0.1
	2.5	2.6	14	2.3	0.3	0.1
	3	3.2	14	2.8	0.3	0.1
	4	4.2	14	3.8	0.3	0.1



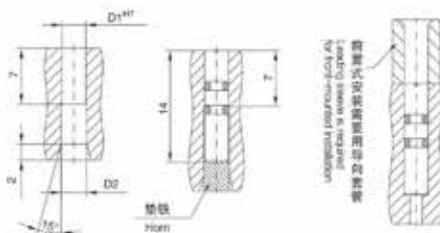
Type Pattern D L Year
A10 - YR - 2 - 14 - 22

产品特点 Precautions

- 微型日期章采用分型面压入式结构O型圈定位，安装方便，适宜电子小零件的模具日期指示。

The micro data marked pins use the sub-surface pressure structure and O-ring positioning for convenient installation, and it is applied to the data indication of the mold of small electronic parts.

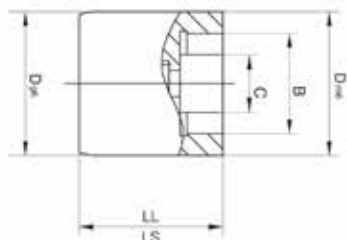
安装方法 Installation diagram



整体式三圈日期章

DATE STAMPS

A11S / A11L



原材料	硬度
SUS420	HRC 48-52

其他尺寸和刻字，敬请洽询
Other engravings available on request

Type	D(mm)	B(mm)	C(mm)	LS(mm)	LL(mm)	文字深度 Text Depth	箭头深度 Arrow Depth
A11S	5	4	2	10	20	0.15	0.2
	8	5.3	2.5	10	20	0.18	0.25
A11L	10	6.4	3.2	12	20	0.2	0.4
	12	8	4	12	20	0.2	0.4
	16	10.5	5.5	14	20	0.25	0.45
	20	12	6	16	20	0.25	0.45



Type Pattern D L Year
A11S - YMD - 6 - 10 - 22

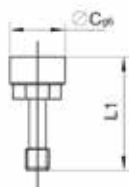
产品特点 Precautions

- A11S为短款，等同于米思米的DTBZ型号，我们比DTDZ增加了D12和D20的尺寸。
- A11L为长款，长度统一为20mm。
- 本款日期章为整体结构设计，结构紧凑，节省了模具的空间，钢珠卡位：外圈12位、31位；内圈12位、10位。
- 安装方法与整体型日期章一样。
- A11S is a short model, which is equivalent to Mizumi's DTBZ model. Compared with DTDZ, we have increased the size of D12 and D20.
- A11L is a long section with a uniform length of 20mm.
- This type date marked pins use the overall structure design, the compact structure saves the space of mold, and the steel ball card bit: 12 bits, 31 bits for external ring; 12 bits, 10 bits for inner ring.
- The installation method is same with the overall data marked pins.

O式可换芯三圈日期章

DATE STAMPS

A12



YMD



YM



WY



BKA



BKB

原材料	硬度
SUS420	HRC 48-52

其他尺寸和制字，欢迎洽商
Other engravings available on request

Type	A	B	C	L
A12	6	4.2	2.4	17
	8	5.8	3.6	20
	10	7	4	20
	12	8.5	5	25
	16	11.5	7	33
	20	14	8	33

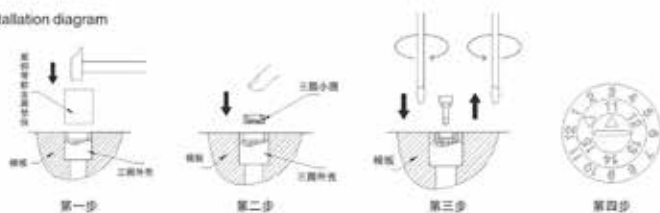


Type Pattern D L Year
A12 - YMD - 6 - 17 - 22

产品特点 Precautions

- 本款同于OPITZ的 DATI 9000系列。
- O式日期章为可更换芯设计，可在模具上直接更换插件，无需卸模更换。
- 外圈指示为弹簧定位，可刻制任何数字和图案。
- 内圈为多边角定位，边角位数为12角和10角，结构紧凑，节省了模具的空间，安装方法为尾部螺丝吊装结构。
- A12 is equivalent to OPITZ's DATI 9000 series.
- A12 use the interchangeable design, and you may replace the inserts on the mold without disassembly of mold for replacement.
- The external ring indicates the spring positioning, and you may engrave any number and pattern. The inner ring is the multiple edges angle positioning, and the number of edges and angles is 12 angle and 10 angles.
- Compact structure saves the space of mold, and the installation method is the screw lifting structure at the tail.

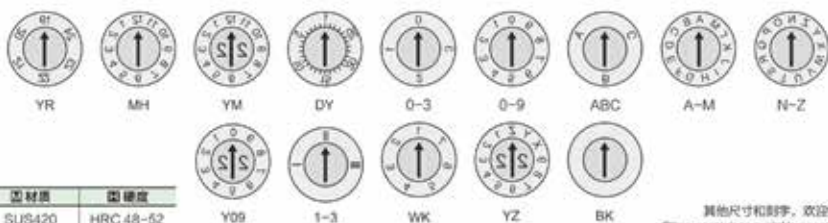
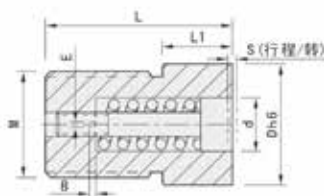
安装方法 Installation diagram



O式可换芯螺纹日期章

DATE STAMPS

A13



型材质	硬度
SUS420	HRC 48-52

其他尺寸和刻字，欢迎洽询
Other engravings available on request

Type	D(mm)	L(mm)	d(mm)	M	L1	ℓ	箭头深度 Arrow Depth	箭头深度 Arrow Depth
A13	3	4	1.5	2.5X0.35	1.8	3.9	0.12	0.2
	3.5	5	1.5	3X0.35	2	4.8	0.12	0.2
	4	5	2.1	3.5X0.35	2	4.8	0.18	0.25
	5	8	3.1	4.5X0.5	2	7.8	0.18	0.4
	6	8	3.1	5X0.5	2	7.8	0.18	0.4
	8	10	4.4	6X0.5	3	9.8	0.2	0.4
	10	12	5.2	8X0.75	3	11.8	0.2	0.4
	12	14	6.2	10X0.75	4	13.8	0.25	0.45
	16	14	8.2	12X1	5	13.8	0.25	0.45



Type Pattern D L Year
A13 - Y09 - 3 - 4 - 22

产品特点 Precautions

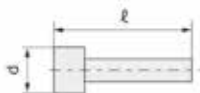
- 凹进指示箭头用作调整和更换零件的螺钉槽。
- 尾部是螺纹方便装配
- The recessed indication arrow is used as a screw slot for the.
- The fitting is done using the random threading of the sleeve

芯子和外壳都可以单独订购 Insert or body can be ordered separately

Type	Name	price
AA13	Insert of the date stamp	1/3 of the A13
AB13	Body of the date stamp	2/3 of the A13

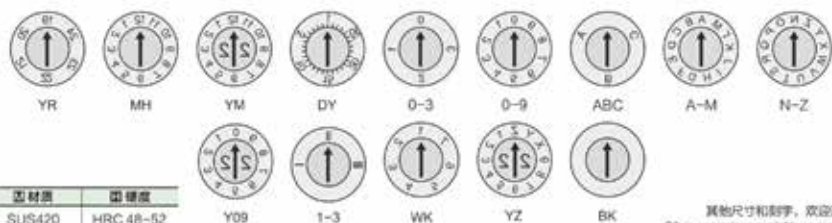
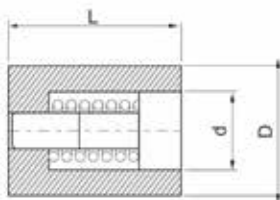


年份零件 箭头零件



F式可换芯日期章

DATE STAMPS

A14

 其他尺寸和刻字, 欢迎洽商
 Other engravings available on request

型材质	硬度
SUS420	HRC 48-52

Type	D(mm)	L(mm)	d(mm)	M	ℓ1	箭头深度 Arrow Depth	箭头深度 Arrow Depth
A14	2.6	4	1.4	0.8x0.2	3.9	0.1	0.2
	3	4	1.5	0.8x0.2	3.9	0.12	0.2
	4	5	2.1	1.1x0.2	4.8	0.18	0.25
	5	8	3.1	1.6x0.2	7.8	0.18	0.4
	6	8	3.1	1.6x0.2	7.8	0.18	0.4
	8	10	4.4	2.3x0.25	9.8	0.2	0.4
	10	12	5.2	2.5x0.35	11.8	0.2	0.4
	12	14	6.2	3x0.35	13.8	0.25	0.45
	16	14	8.2	4x0.35	13.8	0.25	0.45
20	16	11	4x0.35	15.8	0.3	0.5	

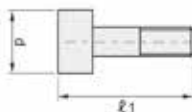
Type	Pattern	D	L	Year
A14	YR	2.6	4	22

产品特点 Precautions

- 可以和 HASCO 的 Z48715, Z48716, Z48717, Z48718, Z48720, Z48722, Z48723, Z48725, Z48730, Z48731, Z48732, Z48733, Z48734, Z48735 以及 DME 的 FOM, FYM, FOY, FOD, FOS, FAM, FNZ, FOB, FXX, 还有 OPITZ 的 DATI 1300 系列互换。
- 可在模具上直接更换备件, 无需加模更换。
- 安装方便, 弹簧定位, 零件结构简单。
- 由于是细螺纹调节, 分型面有一牙螺距(max)的上下浮动。
- 安装时取下芯子, 以免芯子的螺牙损伤。
- It can be interchanged with HASCO's Z48715, Z48716, Z48717, Z48718, Z48720, Z48722, Z48723, Z48725, Z48730, Z48731, Z48732, Z48733, Z48734, Z48735 and DME's FOM, FYM, FOY, FOD, FOS, FAM, FNZ, FOB, FXX and OPITZ's DATI 1300 series.
- Replace the inserts on the mold directly without disassembly for replacement.
- The installation is convenient, the spring positioning and part structure are simple.
- Due to the fine thread adjustment, the sub-surface has the plus or minus of distance of one thread (max).
- In installation, remove the core to damage the thread of core.

芯子和外壳都可以单独订购 Insert or body can be ordered separately

Type	Name	price
AA14	Insert of the date stamp	1/3 of the A14
AB14	Body of the date stamp	2/3 of the A14



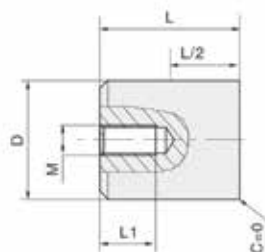
环保日期章

DATE STAMPS

A16



原材料	硬度
SUS420	HRC 48-54



其他尺寸和刻字，欢迎咨询
Other engravings available on request

Type	D	L	L1	A	M	文字深度 Text depth
A16	4	6/8	4	2	2x0.4	0.2
	5	8		3	2x0.45	
	6	8/10	5	4	3x0.5	
	8	10/12	6	5	4x0.7	
	10	10/12/14		6	5x0.8	
	12	12/14	7	7		
16	14/16	7	10	0.3		
20	14/16		B/10		12	



Type Pattern D L
A16 - PET - 4 - 6

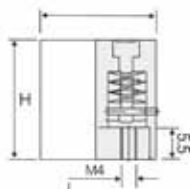
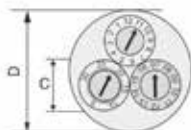
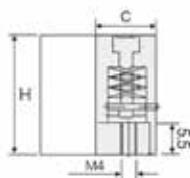
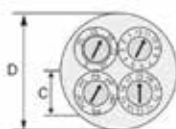
■ 适用树脂 Applicable resins

聚对苯二甲酸乙二酯 Polyethylene terephthalate	高密度聚乙烯 High density polyethylene	聚氯乙烯 Polyvinyl chloride	低密度聚乙烯 Low density polyethylene	聚丙烯 Polypropylene	聚苯乙烯 Polystyrene	其它树脂 Other resins

■ 产品特点 Precautions

- 环保章指示塑料制品由于老化或品质下降等原因需回收的指示标志。
- 表示塑料的牌号，便于产品环保等原因在回收时分类的指示，或是商标及其它需指示的文字或图案。
- 铜制环保章适合薄壁模具、注塑产品，其散热好的效果。
- 尾部可选择攻牙，方便安装。
- Environmental protection stamp indicates indication sign to recover plastic products due to those reasons, such as the age and decrease of quality, etc.
- It indicates grade of plastics, which is convenient to classify indications or trademark or other characters or patterns needed to be indicated when recovery is made, due to those reasons, such as environmental protection of products, etc.
- Copper recycling insert is suitable for thin-walled mold plastic products, because the heat dispersion is good.
- Tapping can be selected at the tail for easy installation of date stamps.

A17

A17-3

A17-4


其他尺寸和刻字，欢迎洽商
Other engravings available on request

Type	尺寸 Size		
	D	H	C
A17-3/28	28	25	12
A17-3/32	32		14
A17-3/36	36		16

Type	尺寸 Size		
	D	H	C
A17-4/32	32	25	12
A17-4/36	36		14
A17-4/40	40		16



Type Year

A17 - 22

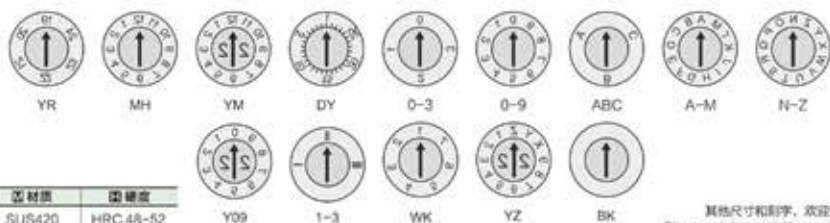
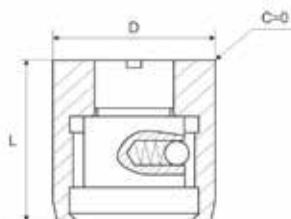
产品特点 Precautions

- 复合了年月日章、年月日班为一体，美化布局。
- 安装方便，简化安装工艺。
- 可根据要求定制三与四个不同组合的文字与图案。
- It integrates the Year/month/day marked pins and Year/month/day shift for landscaping layout.
- The installation is convenient, and the installation process is simplified.
- You may customer three and four combinations of text and pattern according to your requirements.

镀铜日期章

DATE STAMPS

A18



原材料	硬度
SUS420	HRC48-52

其他尺寸和刻字，欢迎洽商
Other engravings available on request

Type	D	L	文字深度 Text depth	箭头深度 Arrow depth
A18	3	6, 8, 10	0.14	0.25
	4			
	5			
	6	8, 10	0.18	0.4
	8	10		
	10	10, 12	0.2	
	12	12, 14		
	16	14	0.25	0.45
20	14, 16			



Type	Pattern	D	L	Year
A18	- YR	- 3	- 6	- 22

取出 Removal

规格 Specification	3	4	5	6	8	10	12	16	20
取出孔径 Removal aperture	≤1.2	≤1.5	≤2.5	≤3	≤4	≤4.5	≤6	≤10	≤12

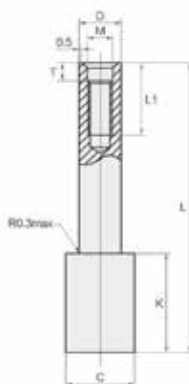
由于日期章、环保章、材料指示标记等的文字和箭头具有一定深度，对于薄壁和精密塑料产品，其散热性有一定影响，且在安装普通日期章后，冷却水道有一定距离，影响冷却效果，新开发的镀铜制作的日期章等系列产品弥补了上述缺陷，适合有精度要求和薄壁塑料上使用。

As the text and arrow of the date marked pins, environmental protection marked pins, material indication mark have a certain depth, for the thin-walled and precision plastic products, the heat dissipation is influenced, and after installation of ordinary date marked pins, there is a certain distance for the cooling water channel, it impacts the cooling effects, the new developed beryllium copper date marked pins and series products make up the above defects, and they are applicable to the products with precision requirements and thin-walled plastic.

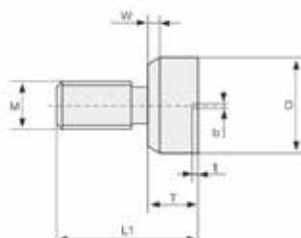
螺丝型压铸模日期章

DATE STAMPS

A19/A22



底座(A22)
Base



头部(A19)
Head



实例：2022年1, 2, 3月

其他尺寸和刻字，欢迎洽商
Other engravings available on request

原材料	硬度
SKD-61	HRC 48-54

Type	D	L	K	C	T	M	L1	文字深度 Text depth	箭头深度 Arrow depth
A19 A22	6	30-150	LQ-5	10	3.2	3x0.5	10	0.3	1.0
	8			12	4.2	4x0.7	12	0.3	1.0
	10			13	4.2	5x0.8	12	0.3	1.2
	12			15	5.2	6x1	15	0.3	1.2
	16			18	6.5	8x1.25	20	0.3	1.2



Type Pattern D L1 L Year

A19 - YR - 6 - 10 - 30 - 22

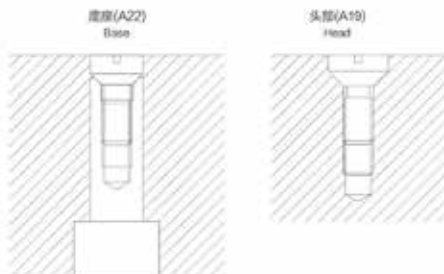
产品特点 Precautions

- 压铸模具专用日期章，只要在模具上直接加工安装孔即可，更换方便。
- A19是单独的压铸模具使用的日期章，A22是底座。
- 可以单独购买A19，直接安装在模具上使用。

Date stamp of die casting die, only to directly process mounting hole on the die and replacement is convenient.

- A19 is the date stamp used for a separate die-casting mold, and A22 is base.
- A19 can also be purchased separately.

安装方法 Installation diagram



压铸模日期章

DATE STAMPS

A20/A21



A20

A21



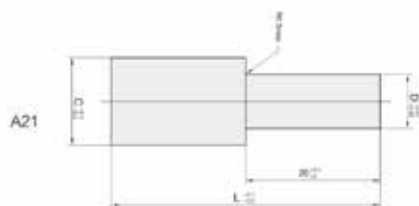
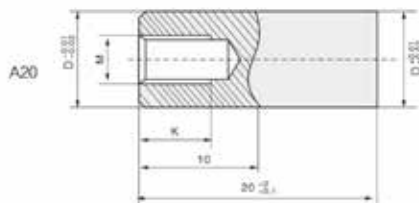
年月合并YMA



年型YR



年月合并YMB



图例	国标准
SKD-61	HRC 48-54

其他尺寸和刻字，欢迎咨询
Other engravings available on request

Type	D $\begin{smallmatrix} +0.02 \\ -0.01 \end{smallmatrix}$	K	M	文字深度 Text depth	凹槽深度 Depth of groove
A20	8	6	3 x 0.5	0.3	1
	10	7.5	4 x 0.7		
	12	9	6 x 1		

Type	$\phi D \begin{smallmatrix} -0.01 \\ -0.02 \end{smallmatrix}$	$\phi C \begin{smallmatrix} -0.1 \\ -0.2 \end{smallmatrix}$	L	文字高度 Text height	凹槽深度 Groove depth
A21	8	13	30-100	0.3	1
	10	15			
	12	17			

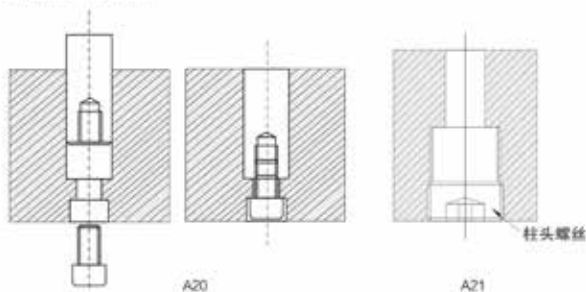


Type	Pattern	D	L	Year
A21	- YR -	8	30	22

产品特点 Precautions

- 压铸模具专用日期章
- 数字外面每处空档处以射冲头触点做为日期标记
- Special date die-casting mould chapter
- The outer ring of a knockout punch each digital gap at point for date marking

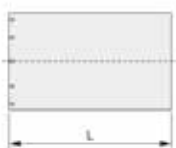
安装方法 Installation diagram



法式日期章 / 凸字章

DATE STAMPS / EMBOSSED

A23/A24



型号	材质	硬度
A23	黄铜 Brass	HB 80-110
A24	SUS420	HRC 48-52

其他尺寸和印字, 欢迎洽商
Other engravings available on request

Type	D	L	文字深度 Text depth	凹槽深度 Depth of groove
A23 A24	3	20	0.5	0.3
	4		0.5	0.3
	5		0.5	0.3
	6		0.5	0.3
	8		0.5	0.3
	10		1	0.5
	12		1	0.5
	14		1	0.5
	16		1	0.5
	20		1	0.5



Type D Year
A23 - 3 - 22

A15

凸字章 Embossed



产品特点 Precautions

所有直径大于5mm的日期章都可以做成凸字章。

All date stamps with a diameter greater than 5mm can be made into embossed stamps.