

BALL BEARING GUIDE POST SETS FOR DIE SET

SERIES 8000

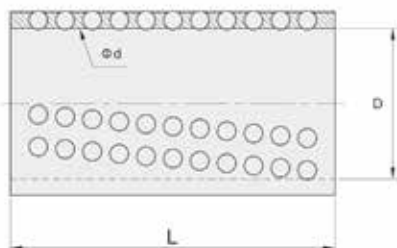
模架用钢珠导柱组件



模架用钢珠导柱组件

BALL BEARING GUIDE POST SETS FOR DIESET

GBH / GBL / GBP



M Body 材质	M Ball 材质	H Ball 硬度
铜 GBH copper	GCr15	HRC 61-66
铝合金 GBL aluminum		
树脂 GBP plastic		

球径d	轴径D	长度L
2	10	15
		20
	12	15
		25
	14	15
		25
16	18	
	30	
3	18	30
		45
		60
	19	45
		60
	20	45
		60
		75
	22	50
		60
		75
	25	50
75		
90		
28	60	
	75	

球径d	轴径D	长度L
2	28	50
		60
		75
	30	50
		60
		75
4	32	80
		90
		110
	35	60
		75
		90
	36	60
		75
		90
	38	60
		75
		90

球径d	轴径D	长度L
4	40	70
		80
		90
	50	70
		80
		90
5	38	60
		70
		90
	40	60
		90
		110
	50	60
		90
		110
	60	70
		110
		120
70	80	
	120	
	150	
80	100	
	120	
	150	

模架用钢珠导柱组件/装卸型

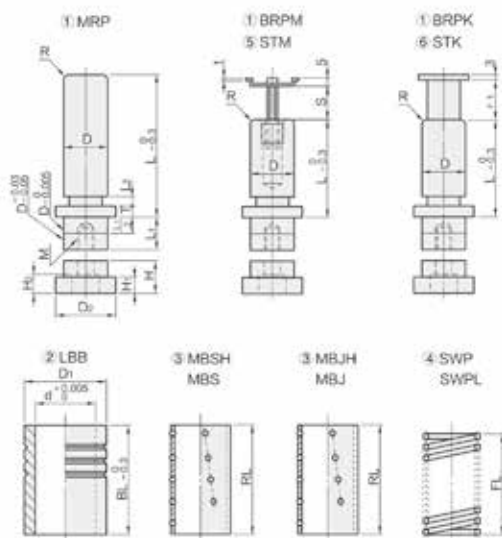
BALL BEARING GUIDE POST SETS FOR DIESET / REMOVABLE TYPE

高刚性钢珠导柱组件

钢球导柱组件



Type	组成零件 Part				
	1	2	3	4	5
RBSH	MRP				-
RMSH	BRPM		MBSH		STM
RKSH	BRPK	LBB		SWP	- STK
QMSH	MRP				-
QMSH	BRPM		MBJH		STM
QKSH	BRPK				- STK
RS	MRP				-
RM	BRPM		MBS		STM
RK	BRPK	LBB		SWP	- STK
QS	MRP				-
QM	BRPM		MBJ		STM
QK	BRPK				- STK



MRPP · BRPM · BRPK												
D	D1	L1	L2	T	H	H1	H2	D2	D3	t	M	R
20	29	15		5				28	19.5		8 × 18	2.0
22	+0.020 +0.015	31	16	10	8	14	7	8.5	30	21.5		3.0
25		36	18					35	24.5	1.5		
28	+0.025 +0.020	39	20	10	16	8	10.5	40	31.5		10 × 22	3.5
32		44	23	12				49	37.5	2.0		4.0
38	+0.030 +0.025	53	27	15	12	18	10	12.5	55	44.5		5.0
45		59	32		15	20	12	14.5	62	49.5		
50	+0.035 +0.030	69	35								14 × 31	5.0

LBB		RL	s	S1
d	D4			
26	37	50	0-19	15
28	40	50	0-23	20
31	44	75	0-30	25
34	48	90	0-37	30
40	54	110	0-47	35
48	63			
55	74			
60	78			

模架用钢珠导柱组件/装卸型

BALL BEARING GUIDE POST SETS FOR DIESET / REMOVABLE TYPE

Type	PD	L						② LBB		RL	④ FL	
								Code	BL			
RGSB RMSB RKSB	20	80	90	100	110	120	L (LBB)	50	50	40140		
	22	80	90	100	110	120		50	50			
QBSB QMSB QKSB	25	80	90	100	110	120		130	60	60	40150	
	28		100	110	120	130		140	150	160		60
80											75	
RB RM RK QB QM QK	32			120	130	140		150	160	80	75	50150
	38										140	
45			140	150	160	170		180	100			90
	50									160	170	180
120		110	80190									



Type PD L
RGSB - 20 - 80

■ 产品特点 Precautions

Type	钢珠数量 Ball	衬套材质 Material	挡块 Stopper
RBSB	数量多 More	铝合金 Aluminum cage	无挡块 No stopper
QBSB	数量多 More	树脂 Resin cage	无挡块 No stopper
RMSB	数量多 More	铝合金 Aluminum cage	可动挡块 Movable stopper
QMSB	数量多 More	树脂 Resin cage	可动挡块 Movable stopper
RKSB	数量多 More	铝合金 Aluminum cage	固定挡块 Fixed stopper
QKSB	数量多 More	树脂 Resin cage	固定挡块 Fixed stopper
RB	数量少 Few	铝合金 Aluminum cage	无挡块 No stopper
QB	数量少 Few	树脂 Resin cage	无挡块 No stopper
RM	数量少 Few	铝合金 Aluminum cage	可动挡块 Movable stopper
QM	数量少 Few	树脂 Resin cage	可动挡块 Movable stopper
RK	数量少 Few	铝合金 Aluminum cage	固定挡块 Fixed stopper
QK	数量少 Few	树脂 Resin cage	固定挡块 Fixed stopper

■ 产品特点 Precautions

1. 钢珠数量多，强度更高。
2. 铝合金球套，保持力大，树脂套，轻便，不产生磨损粉末。
3. 可动挡块高度可调节，适合闭合度低的模具，固定挡块，强度大，适合导套之间有插拔动作的模具。
4. 压入型需要通过油压机安装到模板，装卸型需要用法兰安装。

1. Large number of steel balls, higher strength
2. Aluminum cage, strong holding force, Resin cage, light and no wear powder
3. The height of the Movable stopper is adjustable, suitable for molds with low closing degree, and the Fixed stopper has high strength, suitable for molds with inserting and pulling actions between the guide pillars.
4. The Press-Fit post type needs to be installed to the template by a hydraulic machine, and the Detachable post type needs to be installed with a flange.

模架用钢珠导柱组件/压入型

BALL BEARING GUIDE POST SETS FOR DIE SET / PRESS FIT POST

高刚性钢珠导柱组件

无挡块
No stopper

PBSH
(GBSH)



可动挡块
Movable stopper

PMSH
(GMSH)



固定挡块
Fixed stopper

PKSH
(GKSH)



铝合金球衬套 Aluminum cage
(树脂球衬套 Resin cage)

钢球导柱组件

无挡块
No stopper

PB
(GB)



可动挡块
Movable stopper

PM
(GM)



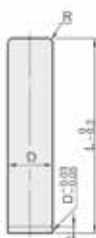
固定挡块
Fixed stopper

PK
(GK)



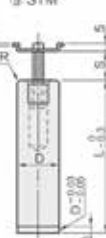
Type	组成零件 Part				
	1	2	3	4	5
PBSH	MSP				-
PMSH	BSPM		MBSH		STM
PKSH	BSPK				-
GBSH	MSP	LBB		SWP	STK
GMSH	BSPM		MBJH		STM
GKSH	BSPK				-
FB	MSP				-
PM	BSPM		MBS		STM
PK	BSPK			SWP	-
GB	MSP	LBB			-
GM	BSPM		MBJ		STM
GK	BSPK				-

① MSP



① BSPM

② STM

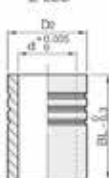


① BSPK

② STK

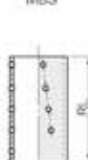


② LBB



③ MBSH

MBS



③ MBJH

MBJ



④ SWP



MSP - BSPM - BSPK				
D	A	t	R	
20	4	1.6	2.0	2.0
22				3.0
25				3.0
28	5	2.0	3.5	3.5
32				3.5
38	6	2.0	4.0	4.0
45				4.0
50				4.0

LBB		
d	D0	
20	37	-0.007
22	40	
25	44	
28	48	
32	54	-0.008
38	63	
45	74	
50	78	-0.010

RL	S	S1
50	0-19	15
60	0-23	20
75	0-30	25
90	0-37	30
110	0-47	35

模架用钢珠导柱组件/压入型

BALL BEARING GUIDE POST SETS FOR DIE SET / PRESS FIT POST

Type	D	L										② LBB		RL	4 FL
												Code	BL		
PBSH	20	100	110	120	130	140	150	160	170	180	L (LBB)	50	50	40-140	
PMSH	22											50	50	40-140	
PKSH		120	130	140	150	160	170	180	60	60					
GBSH	25											60	60	40-150	
GMSH		120	130	140	150	160	170	180	80	75					
GKSH	28											60	60	50-150	
		140	150	160	170	180	190	200	80	75					
PB	32											80	75	70-190	
PM		160	170	180	190	200	220	240	100	90					
PK	38											80	75	80-190	
GB		180	190	200	220	240	260	100	90						
GM	45											100	90	80-190	
GK		180	190	200	220	240	260	120	110						
	50											100	90	80-190	
		220	240	260	120	110									



Type D L
PBSH - 20 - 100

■ 产品对比表 Comparison Table

Type	钢珠数量 Ball	衬套材质 Material	挡块 Stopper
PBSH	数量多 More	铝合金 Aluminum cage	无挡块 No stopper
GBSH	数量多 More	树脂 Resin cage	无挡块 No stopper
PMSH	数量多 More	铝合金 Aluminum cage	可动挡块 Movable stopper
GMSH	数量多 More	树脂 Resin cage	可动挡块 Movable stopper
PKSH	数量多 More	铝合金 Aluminum cage	固定挡块 Fixed stopper
GKSH	数量多 More	树脂 Resin cage	固定挡块 Fixed stopper
PB	数量少 Few	铝合金 Aluminum cage	无挡块 No stopper
GB	数量少 Few	树脂 Resin cage	无挡块 No stopper
PM	数量少 Few	铝合金 Aluminum cage	可动挡块 Movable stopper
GM	数量少 Few	树脂 Resin cage	可动挡块 Movable stopper
PK	数量少 Few	铝合金 Aluminum cage	固定挡块 Fixed stopper
GK	数量少 Few	树脂 Resin cage	固定挡块 Fixed stopper

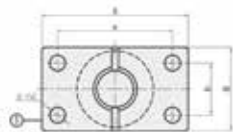
■ 产品特点 Precautions

1. 钢珠数量多，强度更高。
 2. 铝合金球套，保持力大，树脂套，轻便，不产生磨损粉末。
 3. 可动挡块高度可调节，适合闭合度低的模具，固定挡块，强度大，适合导套之间有插拔动作的模具。
 4. 压入型需要通过油压机安装到模板，装卸型需要用法兰安装。
1. Large number of steel balls, higher strength
 2. Aluminum cage, strong holding force, Resin cage, light and no wear powder
 3. The height of the Movable stopper is adjustable, suitable for molds with low closing degree, and the Fixed stopper has high strength, suitable for molds with inserting and pulling actions between the guide pillars.
 4. The Press-Fit post type needs to be installed to the template by a hydraulic machine, and the Detachable post type needs to be installed with a flange.

模架用钢珠导柱组件

BALL BEARING GUIDE POST SETS FOR DIESET

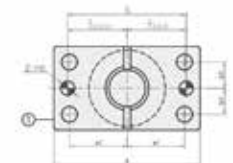
MY



M 材质 H 硬度

① FC1 50	
② 45C	55HRC-(油温淬火)
③ FC250	

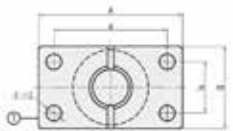
MYZP



M 材质 H 硬度

① FC1 50	镀铬固体氮化处理
② 45C	55HRC-(油温淬火)
③ FC250	

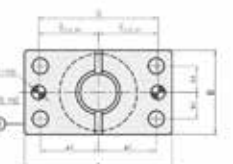
MYZ



M 材质 H 硬度

① FC1 50	镀铬固体氮化处理
② 45C	55HRC-(油温淬火)
③ FC250	

MYP



M 材质 H 硬度

① FC1 50	
② 45C	55HRC-(油温淬火)
③ FC250	

模架用钢珠导柱组件

BALL BEARING GUIDE POST SETS FOR DIESET

D	A	B	a	b	d	H	H1	T	S	a1	b1	eH7	螺栓	固定销		
20	+0.020	74	44	56	30	6.6	30	40	15	56	28	15	6	+0.012 0	M6 30	φ 6 20
25	+0.015	84	48	66	30	9	30	45	20	66	33	15	8		M8 35	φ 8 30
32	+0.025 +0.020	100	58	76	36	11	40	50	20	76	38	18	8	+0.015 0	M10 40	φ 8 30
38	+0.030 +0.025	130	75	100	44	11	50	60	25	100	50	22	10		M10 45	φ 10 40
50	+0.035 +0.030	155	90	125	60	14	65	85	25	125	62.5	30	10		M12 50	φ 10 40

Type	D	L						
MYP	25	90	100	110	120	130	140	150
	32				120	130	140	150

Type	D	L											
MY MYZ MYZP	25	100	110	120	130	140	150	160					
	32			120	130	140	150	160	170	180	200	220	250
	38				130	140	150	160	170	180	200	220	250
	50									180	200	220	250



Type D L
MYP - 25 - 100

■ 产品对比表 Comparison Table

Type	定位孔	Positioning Hole	衬套材质	Material	挡块	Stopper
MY	无	No	油润滑	Oil Lubrication	无挡块	No Stopper
MYP	有	Yes	油润滑	No	无挡块	No Stopper
MYZ	无	No	自润滑	Oil Lubrication	无挡块	No Stopper
MYZP	有	Yes	自润滑	No	无挡块	No Stopper

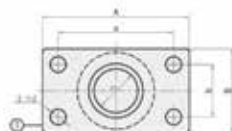
■ 产品特点 Precautions

- 1、MYZ和MYZP都无需润滑油，内部有镶嵌有自润滑石墨块，MYZP相对于MYZ多了定位孔。
 - 2、铝合金钢珠衬套，铝合金衬套保持力大，强度更高，树脂衬套，更加轻便，工作过程中几乎不产生磨损粉末。
 - 3、可动挡块装配时钢珠衬套的高度容易调整，由于可动挡块会随着冲头的下降而降低，因此闭合高度较低的模具也可以对应。
1. Both MYZ and MYZP do not need lubricating oil. There are self-lubricating graphite blocks inlaid inside. MYZP has two positioning holes than MYZ.
 2. Aluminum cage, aluminum alloy bushings have greater holding power and higher strength. Resin cages are lighter and hardly produce wear powder during working.
 3. The height of the steel ball bushing is easy to adjust when the movable stopper is assembled. Since the movable stopper will decrease with the lowering of the punch, the mold with a lower closed height can also be used.

模架用钢珠导柱组件

BALL BEARING GUIDE POST SETS FOR DIESET

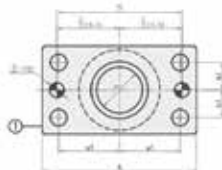
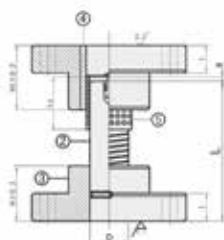
MYA



M 材质	H 硬度
------	------

① FC150	
② GC15	SBHRC-(高温淬火)
③ GC15	SBHRC-
④ AL铝合金	

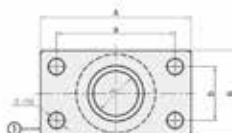
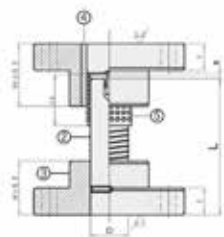
MYAP



M 材质	H 硬度
------	------

① FC150	
② GC15	SBHRC-(高温淬火)
③ GC15	SBHRC-
④ AL铝合金	

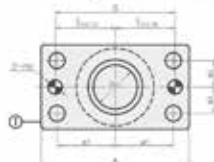
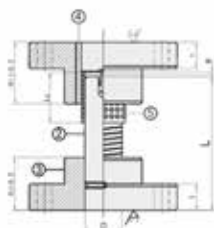
MYJ



M 材质	H 硬度
------	------

① FC150	
② GC15	SBHRC-(高温淬火)
③ GC15	SBHRC-
④ POM树脂	

MYJP



M 材质	H 硬度
------	------

① FC150	
② GC15	SBHRC-(高温淬火)
③ GC15	SBHRC-
④ POM树脂	

模架用钢珠导柱组件

BALL BEARING GUIDE POST SETS FOR DIESET

D	D1	A	B	a	b	d	H	H1	T	Ls	M 挡块可动量	S	a1	b1	eH7	螺栓	固定销	
20	+0.020 +0.015	26	74	44	56	30	6.6	30	50	15	50	0-20	56	28	15	6	+0.012 0	M6 30 φ 6 20
25		31	84	48	66	30	9	30	50	20	50	0-20	66	33	15	8		m8 35 φ 8 30
32	+0.025 +0.020	40	100	58	76	36	11	40	60	20	60	0-25	76	38	18	8	+0.015 0	M10 40 φ 8 30
38	+0.030 +0.025	48	130	75	100	44	11	50	70	25	70	0-29	100	50	22	10		M10 45 φ 10 40
50	+0.035 +0.030	60	155	90	125	60	14	65	90	25	90	0-42	125	62.5	30	10		M12 50 φ 10 40

Type	D	L									
MYA MYJ	20	90	100	110	120	130	140	150			
	25	90	100	110	120	130	140	150	160	180	200
	32		100	110	120	130	140	150	160	180	200
	38					130	140	150	160	180	200
	50								180	200	

Type	D	L									
MYAP MYJP	20	90	100	110	120	130	140	150			
	25	90	100	110	120	130	140	150	160	180	200
	32		100	110	120	130	140	150	160	180	200
	38					130	140	150	160	180	200
	50								180	200	220



Type D L
MYA - 20 - 90

■ 产品对比表 Comparison Table

Type	定位孔 Positioning Hole	衬套材质 Material	挡块 Stopper
MYA	无 No	铝合金 Aluminum cage	可动挡块 Movable Stopper
MYAP	有 Yes	铝合金 Aluminum cage	可动挡块 Movable Stopper
MYJ	无 No	树脂 Resin cage	可动挡块 Movable Stopper
MYJP	有 Yes	树脂 Resin cage	可动挡块 Movable Stopper

■ 产品特点 Precautions

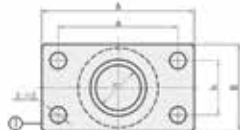
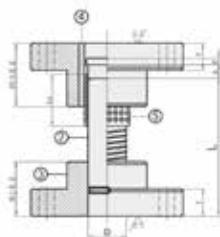
- 1、MYAP和MYJP相对于MYA、MYJ多了定位孔。
- 2、铝合金钢珠衬套，铝合金衬套保持力大，强度更高。树脂衬套，更加轻便，工作过程中几乎不产生磨损粉末。
- 3、可动挡块装配时候钢珠衬套的高度容易调整，由于可动挡块会随着冲床的下降而降低，因此闭合高度较低的模具也可以对应。

1. MYAP/ MYJP has two positioning holes than MYA/MYJ.
2. Aluminum cage, aluminum alloy bushings have greater holding power and higher strength. Resin cages are lighter and hardly produce wear powder during working.
3. The height of the steel ball bushing is easy to adjust when the movable stopper is assembled. Since the movable stopper will decrease with the lowering of the punch, the mold with a lower closed height can also be used.

模架用钢珠导柱组件

BALL BEARING GUIDE POST SETS FOR DIESET

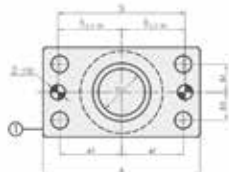
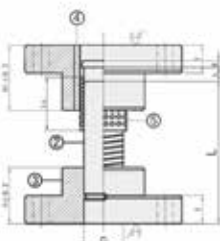
MYAK



M 材质 H 硬度

① FC150	
② GC15	SBHRC-(高温淬火)
③ GC15	SBHRC-
④ 铝合金	

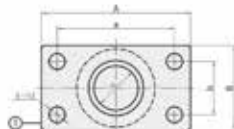
MYKP



M 材质 H 硬度

① FC150	
② GC15	SBHRC-(高温淬火)
③ GC15	SBHRC-
④ 铝合金	

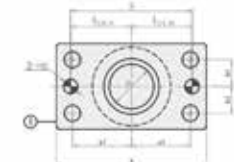
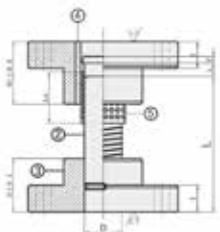
MYJK



M 材质 H 硬度

① FC150	
② GC15	SBHRC-(高温淬火)
③ GC15	SBHRC-
④ POM树脂	

MJKP



M 材质 H 硬度

① FC150	
② GC15	SBHRC-(高温淬火)
③ GC15	SBHRC-
④ POM树脂	

模架用钢珠导柱组件

BALL BEARING GUIDE POST SETS FOR DIESET

D	D1	A	B	a	b	d	H	H1	T	Ls	K 固定挡块	E	S	a1	b1	eH7	螺栓	固定销		
25	+0.020 +0.015	31	84	48	66	30	9	30	50	20	50	20	5	66	33	15	8	+0.015 0	m8 35	φ 8x30
32	+0.025 +0.020	40	100	58	76	36	11	40	60	20	60	25	5	76	38	18	8		M10 40	φ 8x30
38	+0.030 +0.025	48	130	75	100	44	11	50	70	25	70	30	10	100	50	22	10		M10 45	φ 10x40
50	+0.035 +0.030	60	155	90	125	60	14	65	90	25	90	40	10	125	62.5	30	10		M12 50	φ 10x40

Type	D	L										
MJKP	25	100	110	120	130	140	150	160				
	32		110	120	130	140	150	160	180			
MYKP	38								180	200		
	50								180	200	220	

Type	D	L												
MYJK	25	90	100	110	120	130	140	150	160	170	180	200		
	32		100	110	120	130	140	150	160	170	180	200	220	
MYAK	38						130	140	150	160	170	180	200	220
	50								180	200	220			

Type	D	L
MJKP	25	100

■ 产品对比表 Comparison Table

Type	定位孔 Positioning Hole	衬套材质 Material	挡块 Stopper
MYAK	无 No	铝合金 Aluminum cage	固定挡块 Fixed Stopper
MYKP	有 Yes	铝合金 Aluminum cage	固定挡块 Fixed Stopper
MYJK	无 No	树脂 Resin cage	固定挡块 Fixed Stopper
MJKP	有 Yes	树脂 Resin cage	固定挡块 Fixed Stopper

■ 产品特点 Precautions

- 1、MYKP和MJKP相对于MYAK、MYJK多了定位孔。
 - 2、铝合金钢珠衬套，铝合金衬套保持力大，强度更高。树脂衬套，更加轻便，工作过程中几乎不产生磨损粉末。
 - 3、可动挡块装配时候钢珠衬套的高度容易调整，由于可动挡块会随着冲床的下降而降低，因此闭合高度较低的模具也可以对应。
1. MYKP/ MJKP has two positioning holes than MYAK/MYJK.
 2. Aluminum cage, aluminum alloy bushings have greater holding power and higher strength. Resin cages are lighter and hardly produce wear powder during working.
 3. The height of the steel ball bushing is easy to adjust when the movable stopper is assembled. Since the movable stopper will decrease with the lowering of the punch, the mold with a lower closed height can also be used.